

10 | EXTRUSION PROFILES

The extrusion profiles are available in stock lengths in both mill finish and clear anodized, unless otherwise noted. This will allow you to custom machine your own brackets, joining plates, door hinges and other profiles that are not included in the catalog.

If you prefer, we can custom machine any of the profiles in this section that are needed to complete your project. If you need a custom part, just fax or email your drawing and we will create your part to match your print.

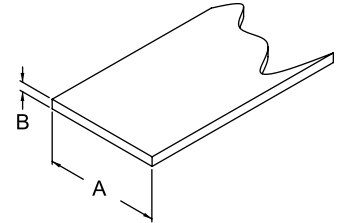
WHEN ORDERING EXTRUSION PROFILES OR CUSTOM MACHINED PARTS, CONSIDER THE FOLLOWING:

1. Include the item number of the part you are ordering.
2. Specify your length of extruded profile in inches and decimals.
3. Include a cut charge for any length under stock length.
4. Remember, if you need a custom machined part, send us your drawing for a quote.

Extrusion Profiles

FLAT STOCK

ANODIZED	MILL FINISH	A*	B	STOCK LN
662030	662031	1.00	.188	144
662034	662035	1	.188	144
662036	662037	1	.25	144
662040	662041	1	.50	144
N/A	662084	1.25	1.25	144
662042	662043	1.49	.25	144
662044	662045	1.5	.50	144
662046	662047	1.5	.75	144
N/A	662085	1.75	1.75	144
662050	662051	2	.188	144
662048	662049	2	.50	144
662142	662143	2.060	2.060	144
N/A	662120	2	2.5	144
662054	662055	2.5	.50	144
N/A	662121	2.5	2.5	144
662052	662053	3	.188	144
662056	662057	3	.25	144
N/A	662154	3	.5	144
662060	662061	3	.75	144
662146	662147	3.060	1.510	144
662062	662063	4	.188	144
662064	662065	4	.25	144
662066	662067	4	.75	144
662076	662077	4	2	144
N/A	662131	4	3	144
N/A	662112	4.5	.25	144
662068	662069	5	.25	144
662070	662071	6	.25	144
662072	662073	6	.375	144



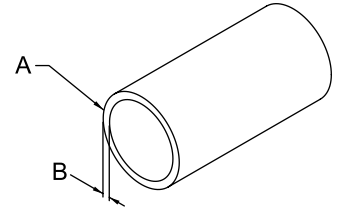
*A is the width of flatstock profile

» See page 11:05 for miscellaneous cut charges.

ALUMINUM TUBE

ANODIZED	MILL FINISH	A	B	STOCK LN
659006	659007	1	.125	144
659008	659009	1.5	.125	144
659010	659011	2	.125	144

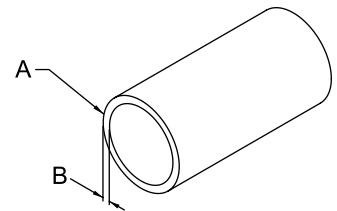
» See page 11:05 for miscellaneous cut charges.



STEEL TUBE

ITEM #	A	B	STOCK LN
659000	1	.125	144
659002	1.5	.125	144
659004	2	.125	144

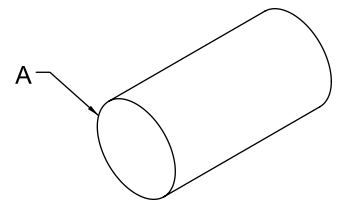
» See page 11:05 for miscellaneous cut charges.



SOLID STEEL ROUND

ITEM #	A	STOCK LN
659001	1	144
659003	1.5	144
659005	2	144

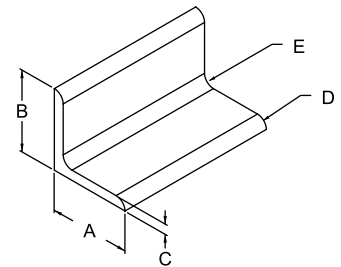
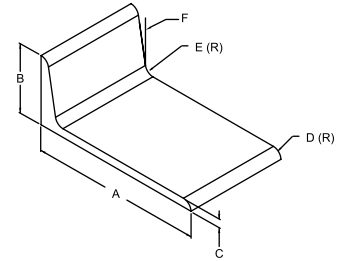
» See page 11:05 for miscellaneous cut charges.



Extrusion Profiles

ANGLES

ANODIZED	MILL FINISH	A	B	C	D	E	F	STOCK LN
662008	662009	1	1	.125	.028	.125		150
662014	662015	1	1	.188	.188	.125		150
662010	662011	1	2	.188	.188	.125		144
662012	662013	1.5	1.5	.188	.125	.088		150
662016	662017	1.5	1.5	.250	.250	.312		150
662022	662023	1.5	3	.250	.250	.312		120
662018	662019	2	2	.188	.188	.125		150
662020	662021	2.5	2.5	.188	.125	.250		150
662024	662025	3	3	.188	.125	.125		150
662026	662027	3	3	.250	.250	.312		150
662028	662029	4.5	4.5	.250	.250	.312		150
662078	662079	5	2	.250	.250	.250	10°	120
N/A	662148	3	2	.250	.250	.312		150



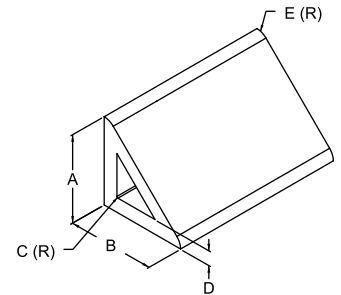
» See page 11:05 for miscellaneous cut charges.

45° GUSSET PROFILE

ANODIZED	MILL FINISH	A	B	C	D	E	STOCK LN
662134*	662135*	1	1	.020	.188	.188	120
662138	662139	1.5	1.5	.020	.250	.250	120
662136*	662137*	2	2	.020	.188	.188	120
662140	662141	3	3	.020	.250	.250	120

*10 Series compatible

» See page 11:05 for miscellaneous cut charges.

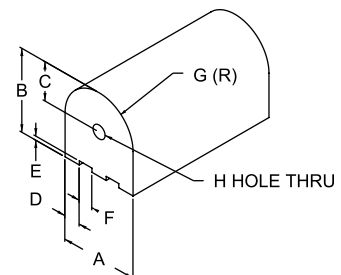


PIVOT NUB PROFILE

ANODIZED	MILL FINISH	A	B	C	D	E	F	G	H	STOCK LN
662106*	662107*	1	1.06	.50	.250	.04	.125	.50	.205	120
662104	662105	1.50	1.60	.75	.314	.08	.279	.75	.265	120

*10 Series compatible

» See page 11:05 for miscellaneous cut charges.

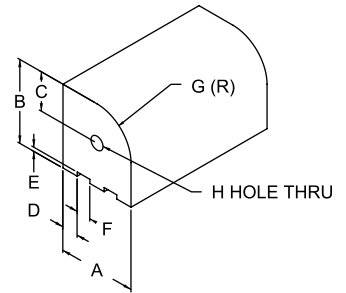


RIGHT ANGLE NUB PROFILE

ANODIZED	MILL FINISH	A	B	C	D	E	F	G	H	STOCK LN
662080*	662081*	1	1.06	.50	.250	.04	.125	.50	.205	120
662082	662083	1.50	1.60	.75	.314	.08	.279	.75	.26	120

*10 Series compatible

» See page 11:05 for miscellaneous cut charges.

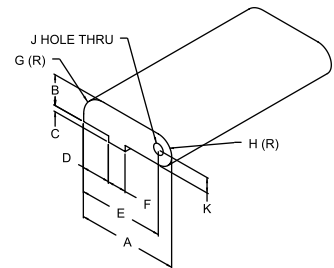


HINGE PROFILES

ANODIZED	MILL FINISH	A	B	C	D	E	F	G	H	J	K	STOCK LN
662108*	662109*	1.156	.500	.060	.252	.906	.249	.375	.250	.180	.250	120
662110	662111	1.655	.500	.100	.469	1.405	.312	.375	.250	.180	.250	120

*10 Series compatible

» See page 11:05 for miscellaneous cut charges.

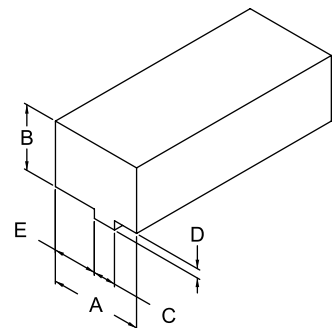


PANEL MOUNT PROFILE

ANODIZED	MILL FINISH	A	B	C	D	E	STOCK LN
662116*	662117*	.812	.700	.247	.050	.373	120
662114	662115	1.25	.875	.310	.125	.600	120

*10 Series compatible

» See page 11:05 for miscellaneous cut charges.



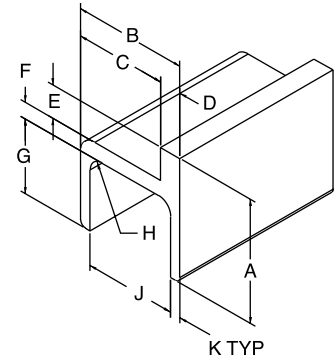
Extrusion Profiles

SINGLE FLANGE BEARING PROFILES

ANODIZED	MILL FINISH	A	B	C	D	E	F	G	H	J	K	STOCK LN
662092*	662093*	2.160	1.701	1.389	.312	.750	.250	1.160	.250	1.389	.156	120
662098	662099	2.818	2.600	2.100	.500	.750	.375	1.693	.312	2.100	.250	120

*10 Series compatible

» See page 11:05 for miscellaneous cut charges.

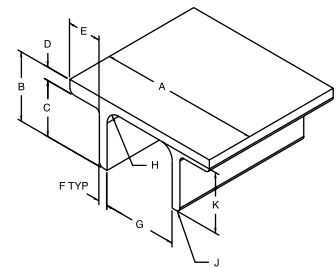


DOUBLE FLANGE BEARING PROFILE

ANODIZED	MILL FINISH	A	B	C	D	E	F	G	H	J	K	STOCK LN
662094*	662095*	3.260	1.316	1.004	.312	.780	.156	1.389	.125	.094	1.160	120
662096*	662097*	4.250	1.316	1.004	.312	.772	.156	2.395	.125	.094	1.160	120
662100	662101	4.500	1.943	1.568	.375	.950	.250	2.100	.312	.125	1.693	120
662102	662103	6.000	1.943	1.568	.375	.950	.250	3.600	.312	.125	1.693	120

*10 Series compatible

» See page 11:05 for miscellaneous cut charges.

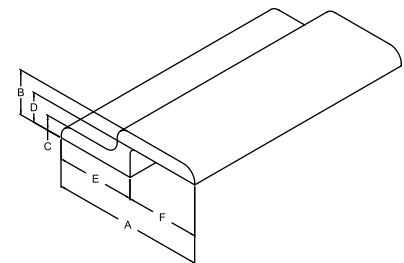


RETAINER ANGLES

ANODIZED	MILL FINISH	A	B	C	D	E	F	STOCK LN
662090*	662091*	1.938	.563	.188	.375	1.0	.938	120
662086	662087	2.879	.840	.250	.590	1.5	1.379	120

*10 Series compatible

» See page 11:05 for miscellaneous cut charges.

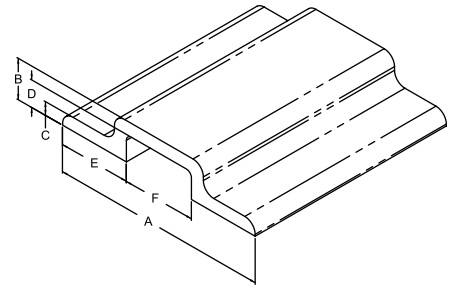


DOUBLE RETAINER ANGLES

ANODIZED	MILL FINISH	A	B	C	D	E	F	STOCK LN
662132*	662133*	3.021	.563	.188	.375	1.0	1.021	120
662088	662089	4.520	.840	.250	.590	1.5	1.523	120

*10 Series compatible

» See page 11:05 for miscellaneous cut charges.



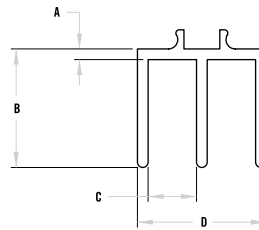
DOOR SLIDE TRACKS

ANODIZED	A	B	C	D
655189*	.062	.688	.281	.750
655188	.060	.650	.275	1.125
655191*	.085	.438	.281	.750
655190	.154	.400	.275	1.125

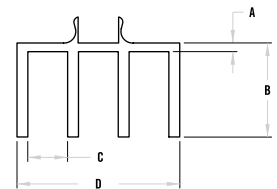
*10 Series compatible

» Profiles stocked in 12' length.

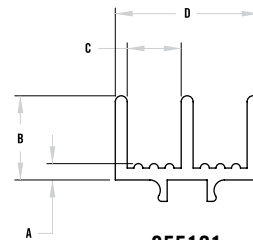
» See page 11:05 for miscellaneous cut charges.



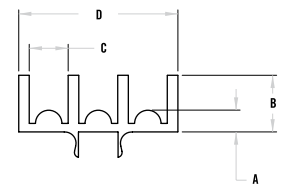
655189



655188



655191



655190